

ONE BEDROOM

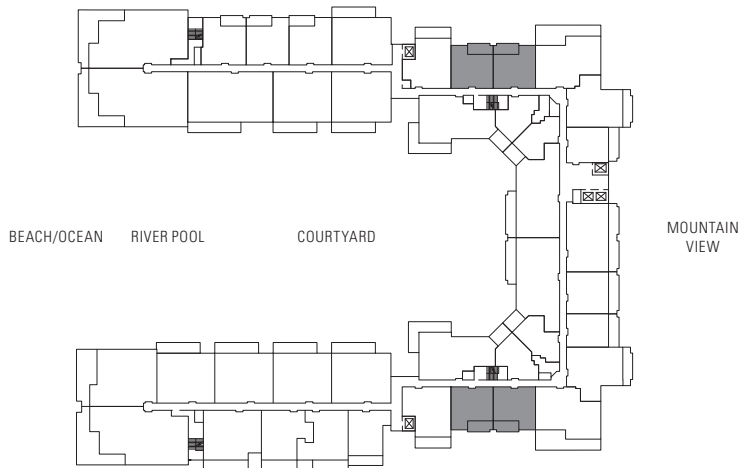
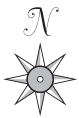
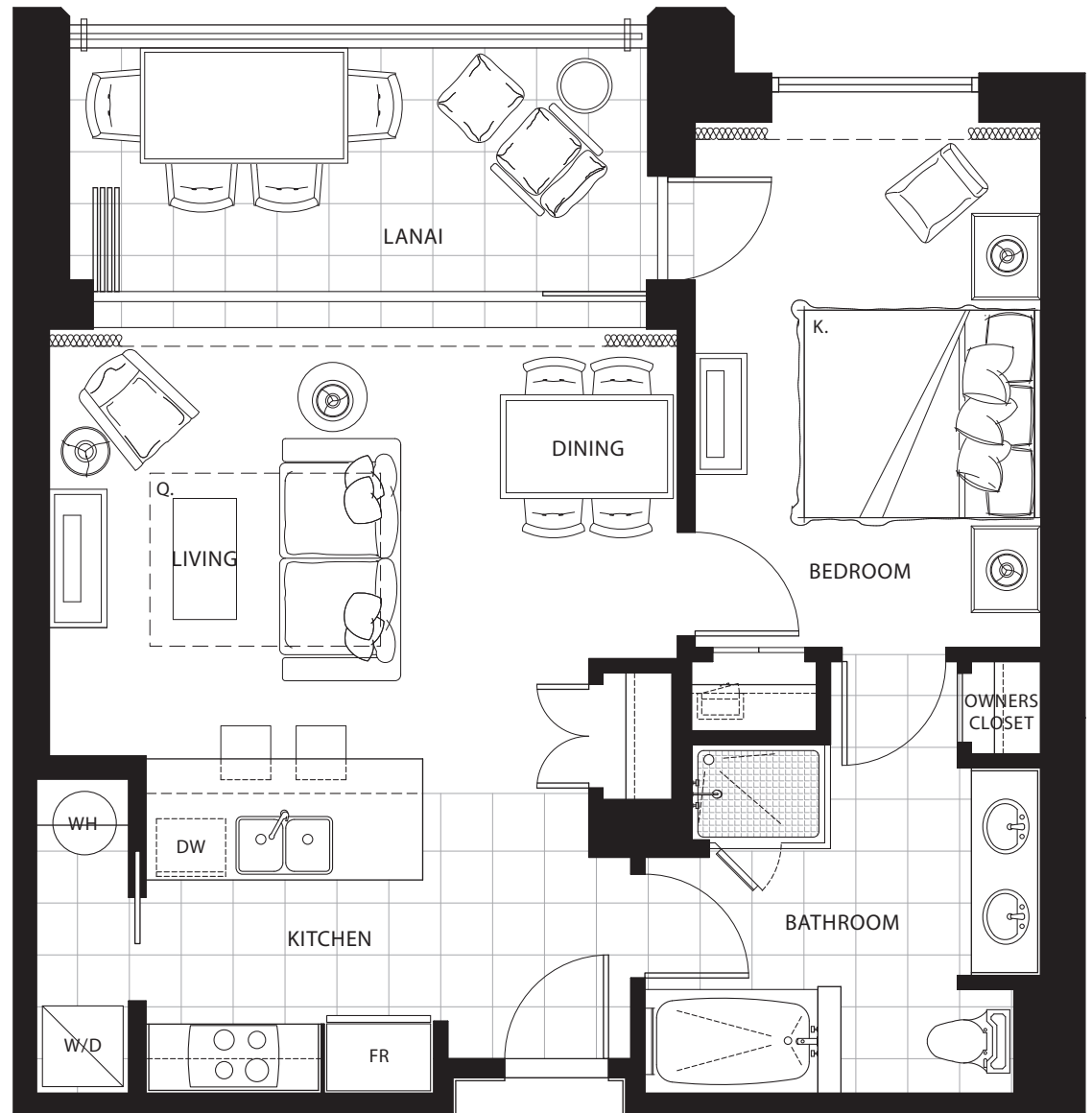
Plan B1

690 sq. ft. Interior

135 sq. ft. Lanai

Suites: 136*, 138*, 214*, 216*, 236,
 238, 314, 316, 336, 338,
 414, 416, 436, 438, 514,
 516, 536, 538, 614, 616,
 636, 638, 714, 716, 736,
 738, 814, 816, 836, 838

* Lanai area larger than noted



Subject to change. Developer reserves the right to make changes and modifications at any time without notice.



HONUA KAI
 KONEA ENCLAVE

ONE BEDROOM

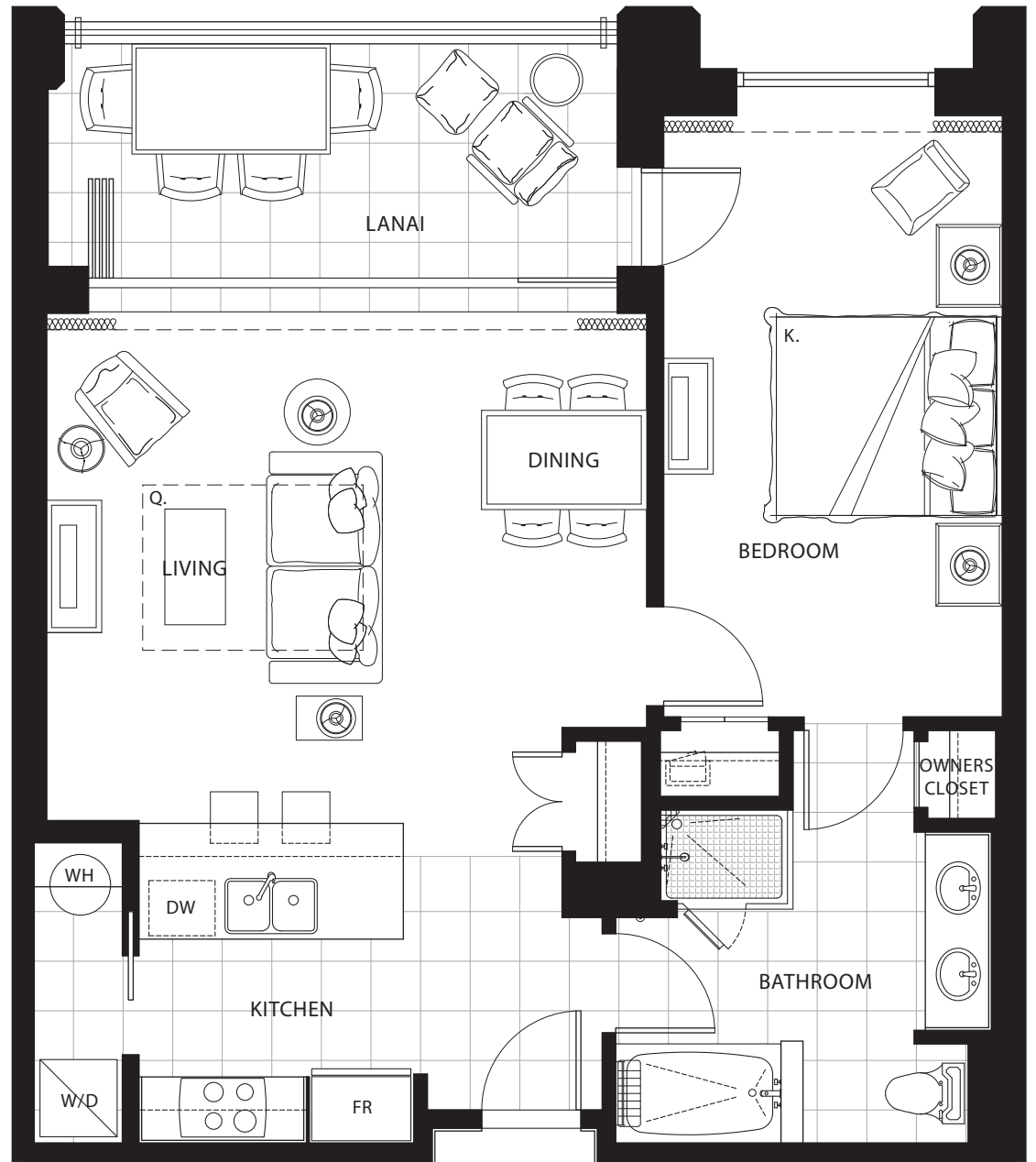
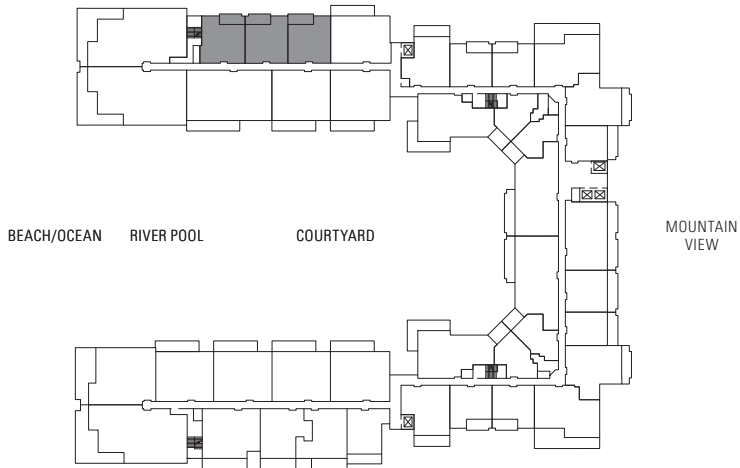
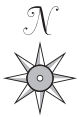
Plan B1b

780 sq. ft. Interior

140 sq. ft. Lanai

Suites: 144*, 146*, 148*, 244, 246,
248, 344, 346, 348, 444,
446, 448, 544, 546, 548,
644, 646, 648, 744, 746,
748

* Lanai area larger than noted



Subject to change. Developer reserves the right to make changes and modifications at any time without notice.

ONE BEDROOM

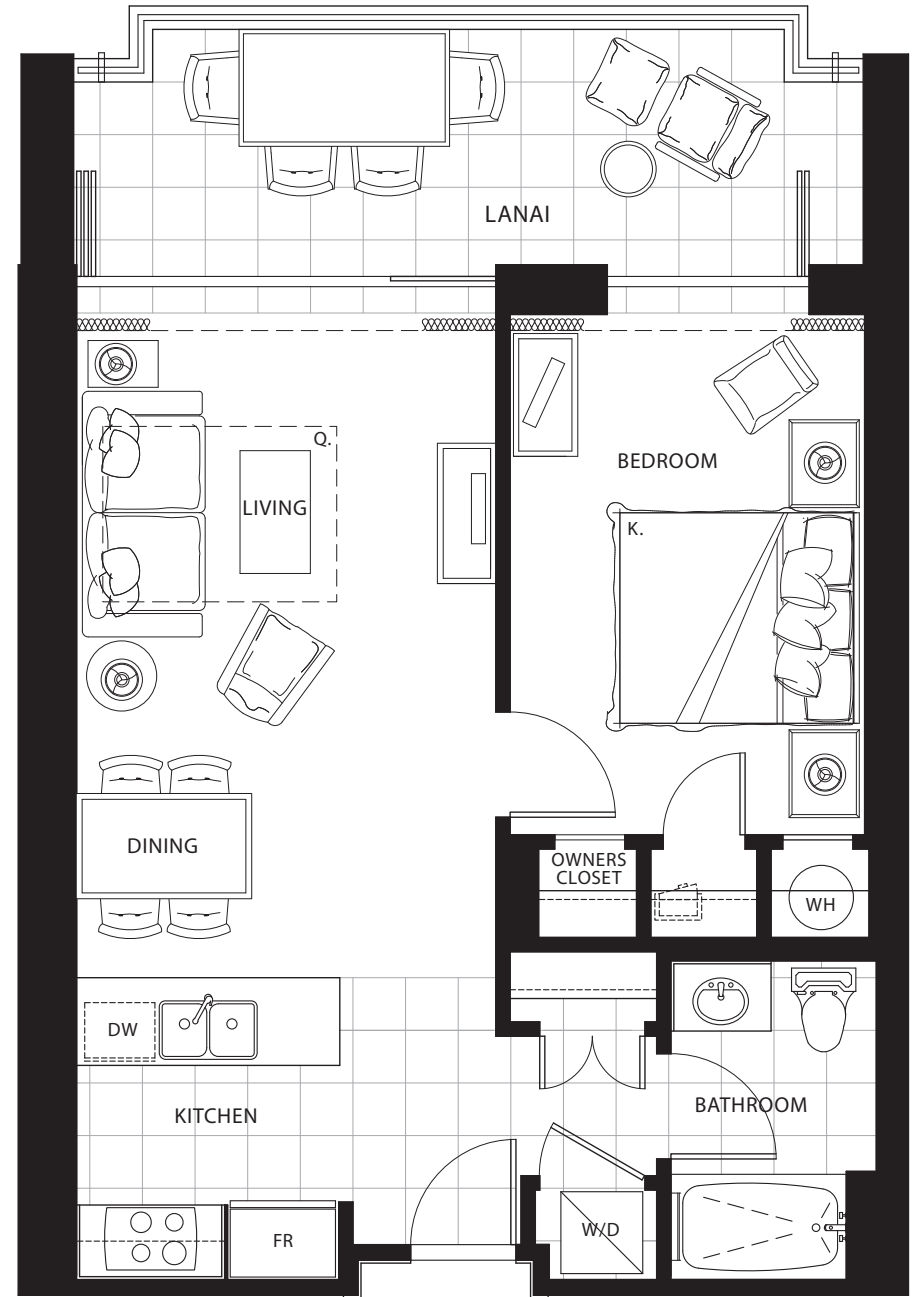
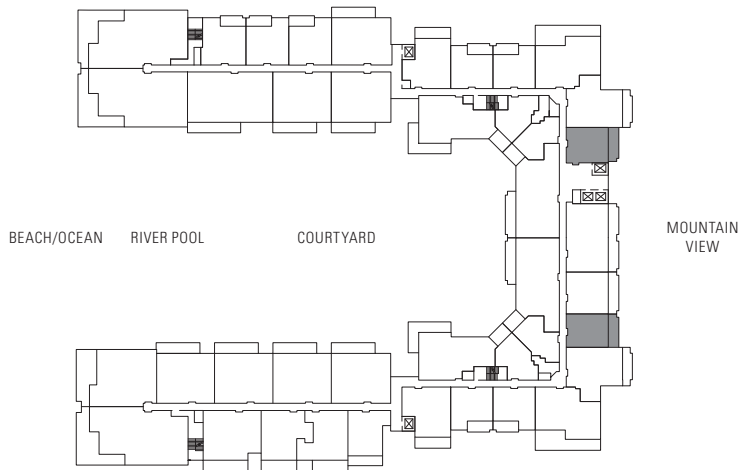
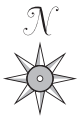
Plan B2

615 sq. ft. Interior

170 sq. ft. Lanai

Suites: 222,* 230,* 322, 330, 422,
430, 522, 530, 622, 630,
722, 730, 822, 830, 922,
930, 1022, 1030

* Lanai area larger than noted



Subject to change. Developer reserves the right to make changes and modifications at any time without notice.

ONE BEDROOM

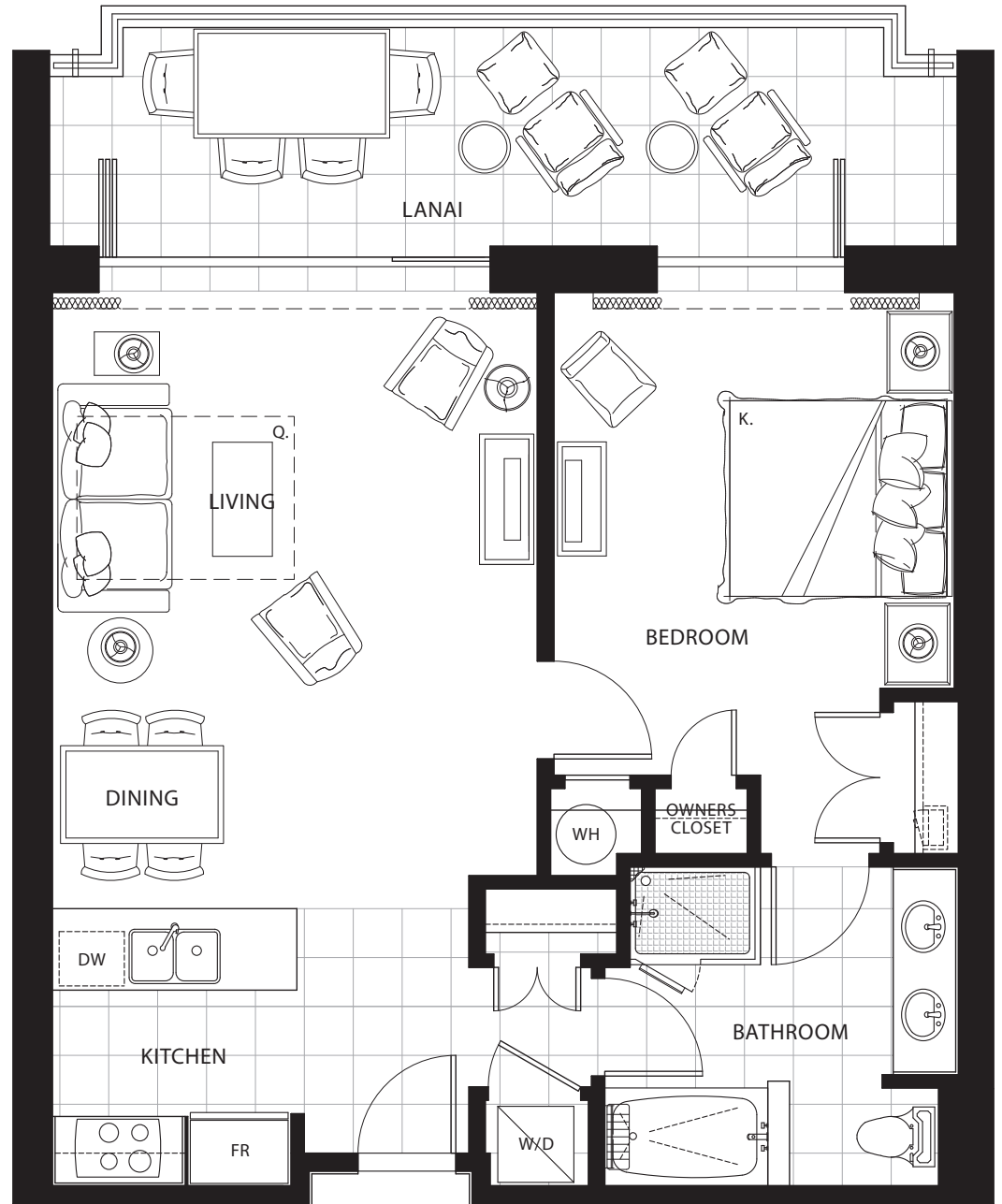
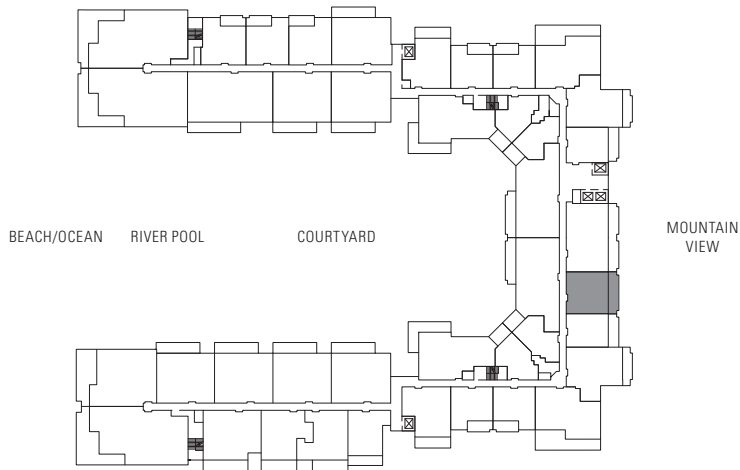
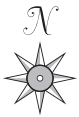
Plan B3

750 sq. ft. Interior

200 sq. ft. Lanai

Suites: 224,* 724, 824, 924, 1024

* Lanai area larger than noted



Subject to change. Developer reserves the right to make changes and modifications at any time without notice.

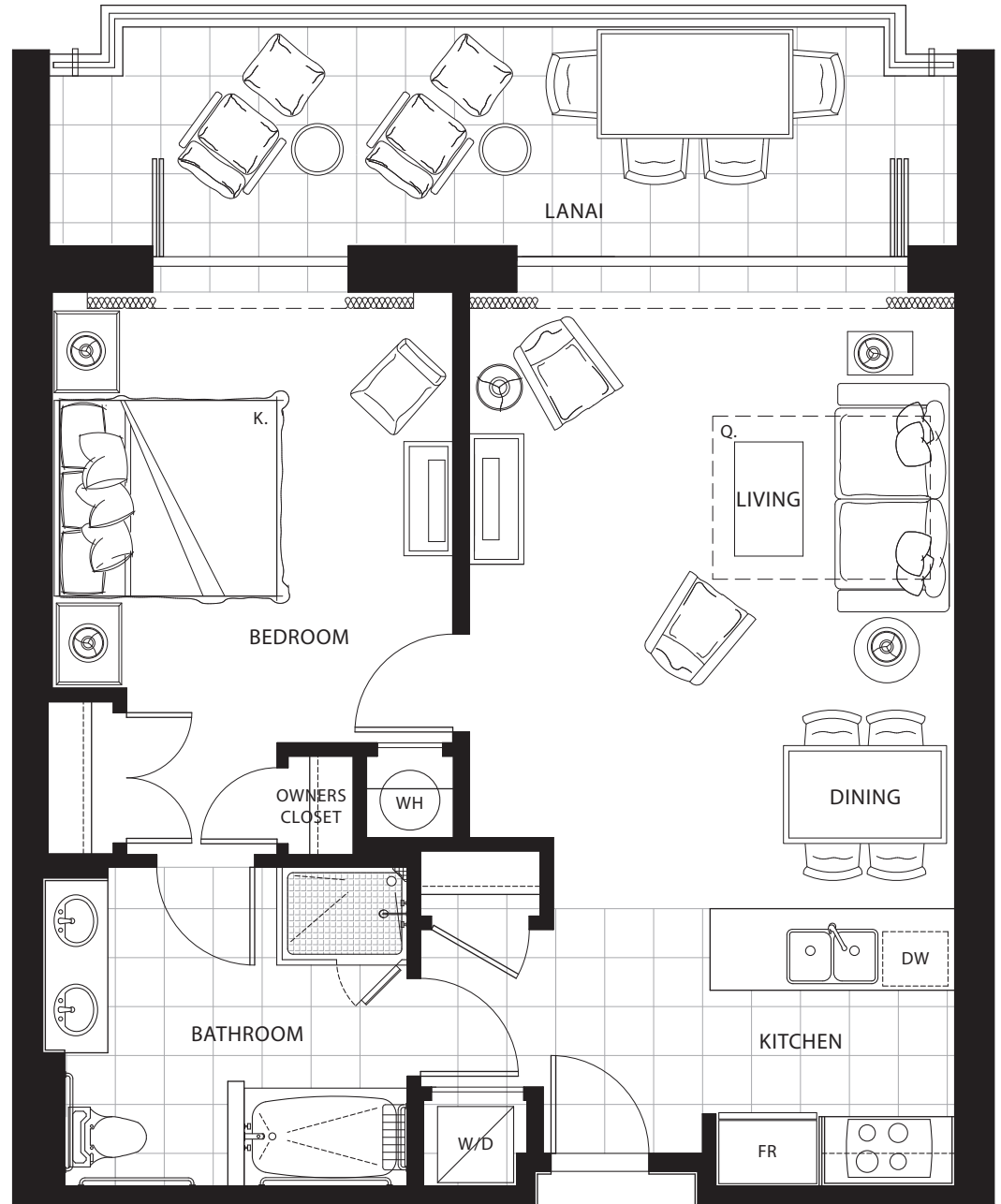
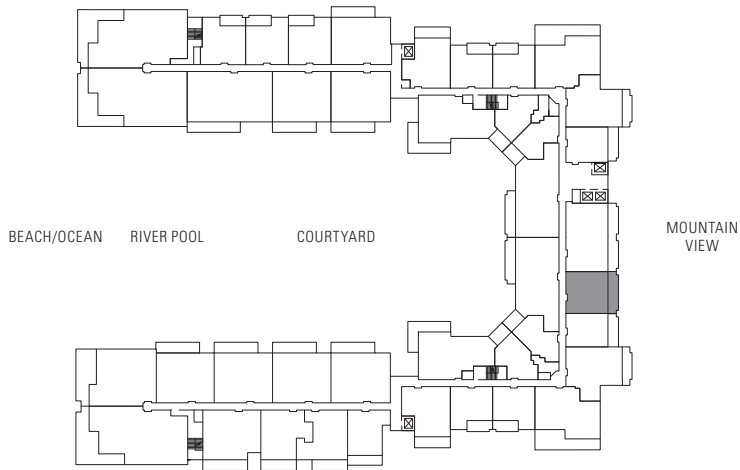
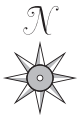
ONE BEDROOM

Plan B3-ADA

750 sq. ft. Interior

200 sq. ft. Lanai

Suites: 324, 424, 524, 624



Subject to change. Developer reserves the right to make changes and modifications at any time without notice.

ONE BEDROOM

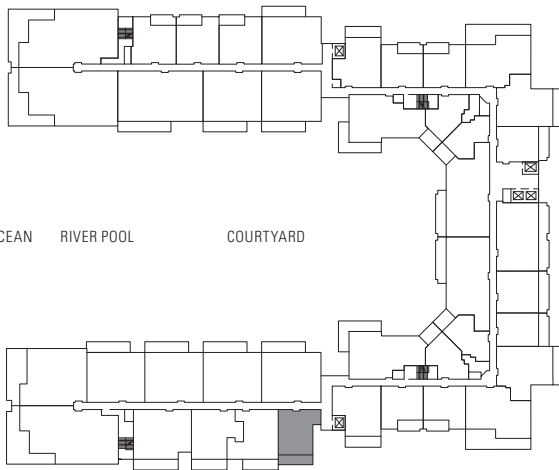
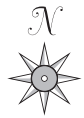
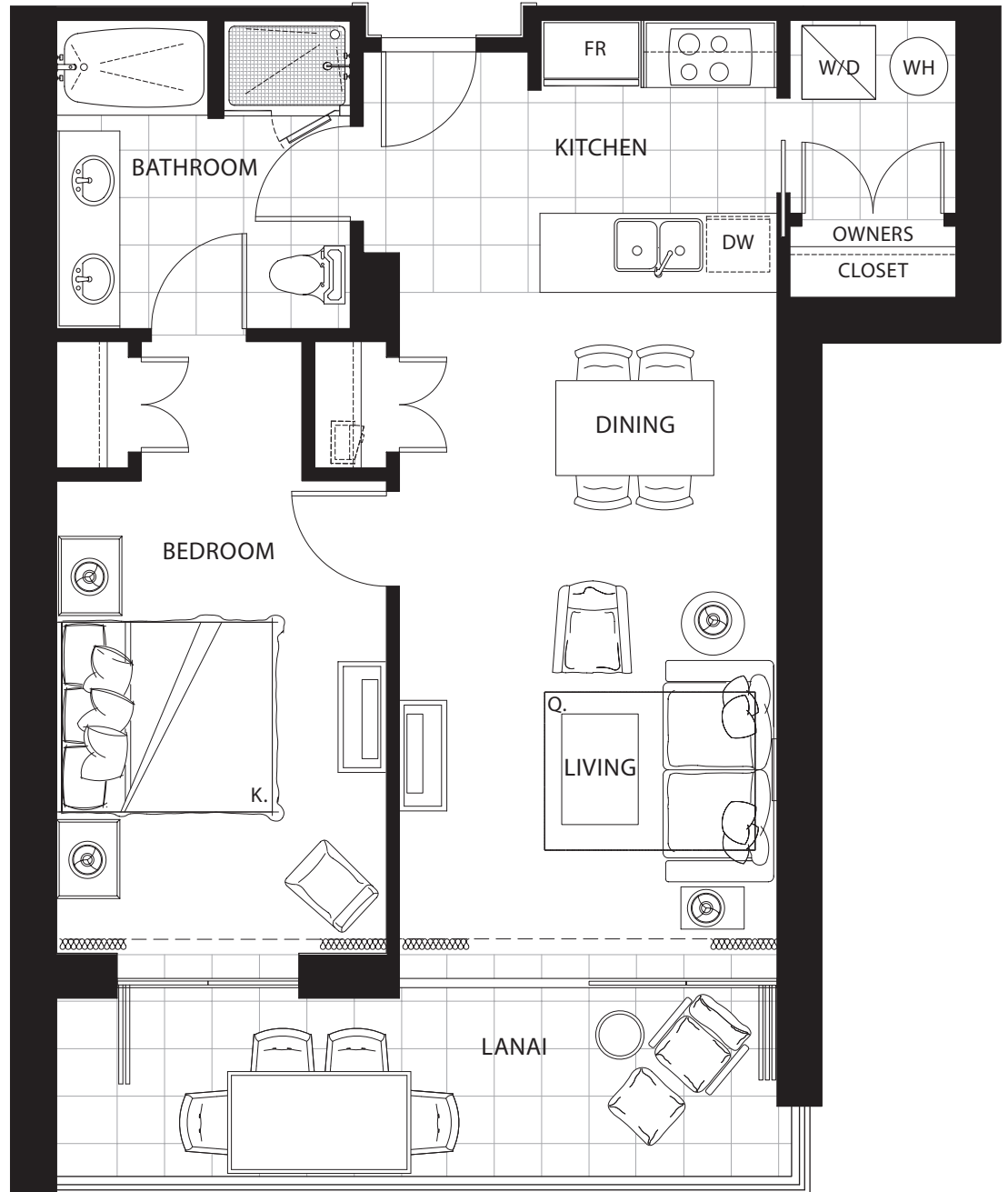
Plan B6

730 sq. ft. Interior

180 sq. ft. Lanai

Suites: 110,* 210, 310, 410, 510,
610, 710

* Lanai area larger than noted



BEACH/OCEAN RIVER POOL COURTYARD

MOUNTAIN VIEW

Subject to change. Developer reserves the right to make changes and modifications at any time without notice.